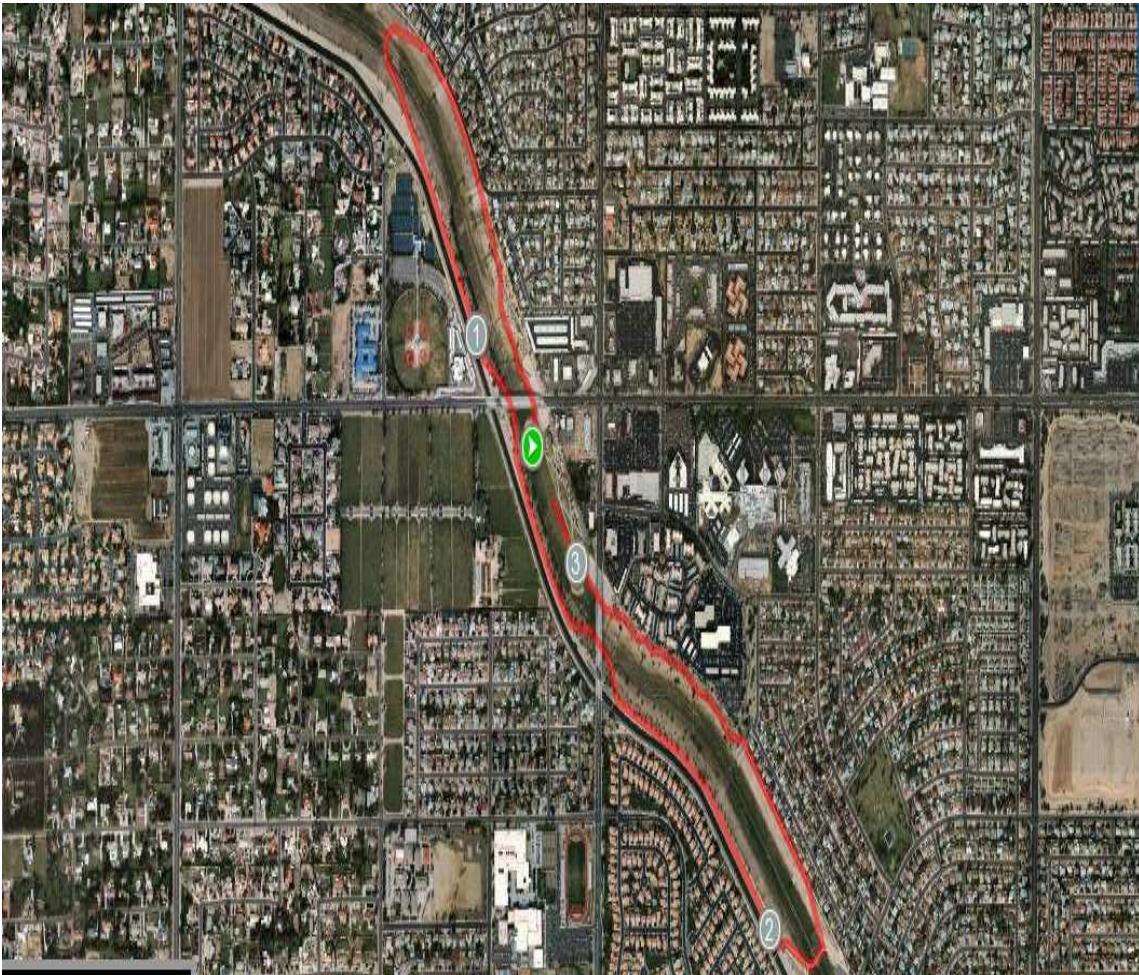


# GCU CROSS COUNTRY INVITATIONAL/OPEN

## Men's 10k Course (6.2 miles) Thunderbird Paseo Park



**START** by basketball courts, run 2 **LOOPS**, and **FINISH** in front of the playground area. Course is marked with cones and taped arrows. **ALWAYS** stay to the outside of the cones. Volunteers will be stationed strategically on the course to direct runners.